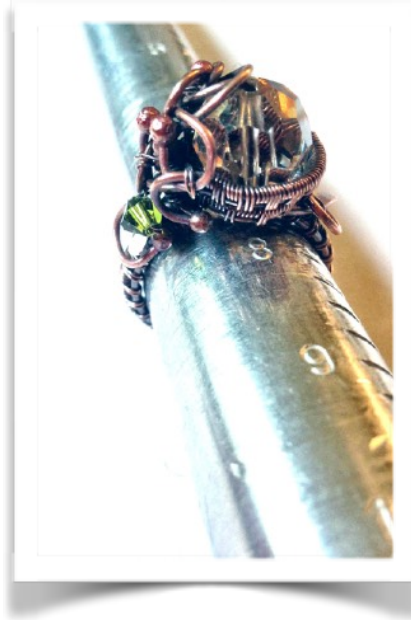


# Paisley Ring



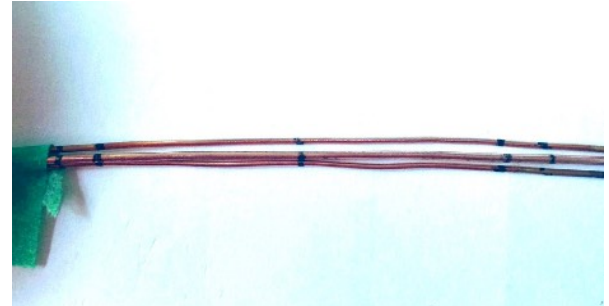
## Supplies Needed

- 1 - 10mm Swarovski round bead
- 2 - 4mm coordinating Swarovski beads
- 1 -4" pieces of 18g copper wire
- 2 - 7" pieces of 20g copper wire with balls on both ends w/ creme brûlée torch
- 2 - 3 1/4" pieces of 20g copper wire with balls on both ends w/ creme brûlée torch
- 6' - 26g or 28g copper wire

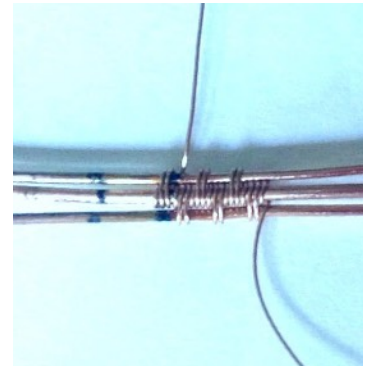
## Tools Needed

- Round nosed pliers
- Smooth flat nosed pliers
- Wire cutters
- Ruler
- Metal file
- Ring mandrel
- Fine tipped marker
- Creme Brûlée torch
- Painter tape (optional)

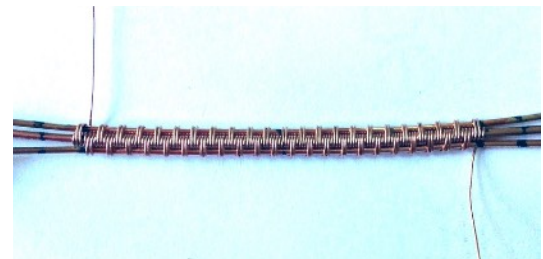
These are the dimensions for a size 8 ring. Mark the centre of the 20g wires after you put the balls on the end. (Mine is 6 1/4" long now so centre is 3 1/8") Wrap a piece of Weaving Wire (WW) around the size of ring you want to make. Measure how long it is. Size 8 is 2 1/4" long. Divide that number by 2. (Mine is 1 1/8") Measure that far to the left of the centre mark and leave a mark on both wires. Repeat for the other side of the centre mark. Now do the same calculations on your 18g wire. Find centre, then 1/2 of the dimensions for your ring size on either side of centre marks. Line the wires up with 20g, 18g, 20g, then line up all the marks on your wires. (Feel free to use painters tape on the right side of your wires to help them from moving)



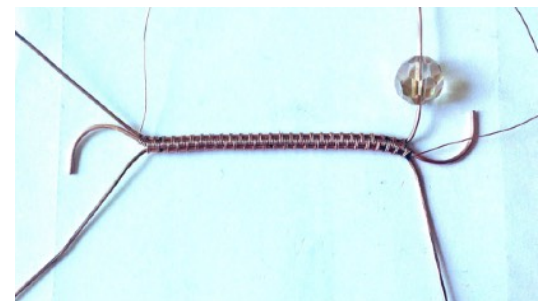
We'll be doing the 1:2:1:2 weave over these three wires. Leave a 12" tail. Attach your Weaving Wire (WW) by putting your wire between the second and the third Base Wires. (BW). Go over the second wire and come up between the second and third wires. Go over the second and the top wire, repeat so you have two stitches the same. Come up between the second and third wires. Go over the second wire and down between the first and second wires, once. Go under the second and third wire. Come up below the third wire, then down between the first and second wire, repeat. To sum up, you'll be wrapping the middle wire once, the top two wires twice, the middle wire once, the bottom two wires twice. That's the 1:2:1:2 weave. Repeat over and over between the first and last mark on your wires. (See picture)



As you weave, constantly check your marks in your wires to make sure your wires haven't slipped. Move them where they need to be to realign if necessary. Make sure you end that weave in a single stitch. Also **MAKE SURE YOU PUSH YOUR WORK BACK TO KEEP IT TIGHT.**



Spread your wires apart. Line up your weave like mine with the bead on the top right side. Wrap the end on both 18g wires around your ring mandrel at size 3.



Trim off roughly 5mm of the 18g arch you made on the last step. (See picture)



Flip work over and hammer 18g ends into paddles. File to shape and make sure you have no burs.



Wrap your weave around the ring mandrel 2 sizes smaller than your end size. Your wires will interlock together like fingers. This is the order starting from the bottom....20g, 18g curled up, 20g with bead on it, 18g curled down, 20g from the left side and on top, 20g from the right side. Pull the wires tight together, then slide ring up to finished size. Press down on 18g wires to form them to the band. (See picture 1)

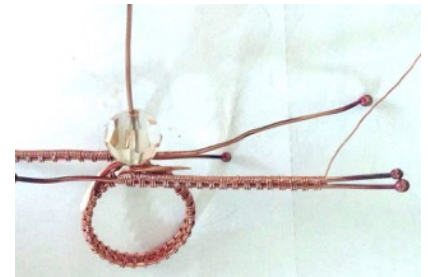


Bend the bead wire over to the left, then with flat pliers, bend the bead wire straight up where it will make the bead sit centred between the 18g curves. (See picture 2)

Have the ring face you with the single 20g wire on the right. Add a short wire on top of the only bare wire on that side. Make sure you make the ends of the wires even before you start your weave. (You'll be starting the weave with some BW from the new wire on the left) With the WW you left when you started the band, wrap the new wire 5 times, then both wires two times. That's 1 set. Repeat until you leave 1/2" BW at the end. Leave 6" of WW attached.



Flip ring to side with both bare wires. Using the attached weaving wire from weaving your band, set the new BW wire on top of the outside BW. Line up both ends of the wires, again you'll have bare BW at the beginning of the weave. Wrap the new wire 3 times & both wires 3 times. This weave is called the 3:3 weave. Leave the WW attached.



Push down on the bead and bend the bead wire over just enough to hold it there. Wrap the first weave (5:3) around the base of the bead clockwise.

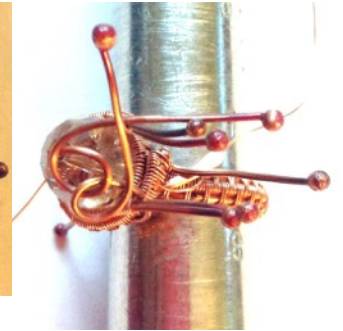
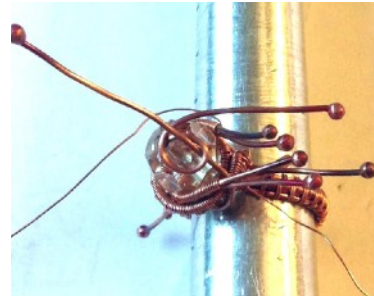




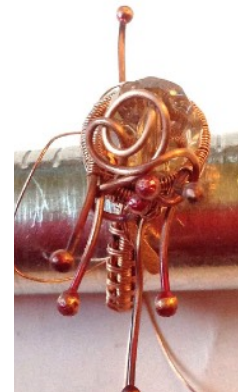
Wrap the other weave (3:3) counterclockwise around the base of the bead. You'll see that all the ends of the weaves are now on one side. Now we work the decorative part of your ring.



Bring the the last bare wire around the bead and up between the ends of the two weaves. Pull tight, then bend the bead wire to the same side as all the weaves end on. With the bead wire, make a loop around the last bare wire. Then make a loop in the opposite direction with the last BW.



Curl each end of the BW's you were working on in the opposite direction then the loops you made. Hook one of the hooks around the top wire of 1 of your weaves. Hook the other end around the bottom wire of the other weave. I've given you two different views of the same step.



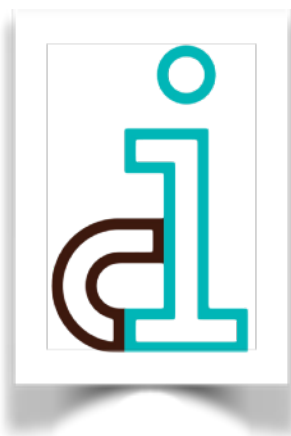
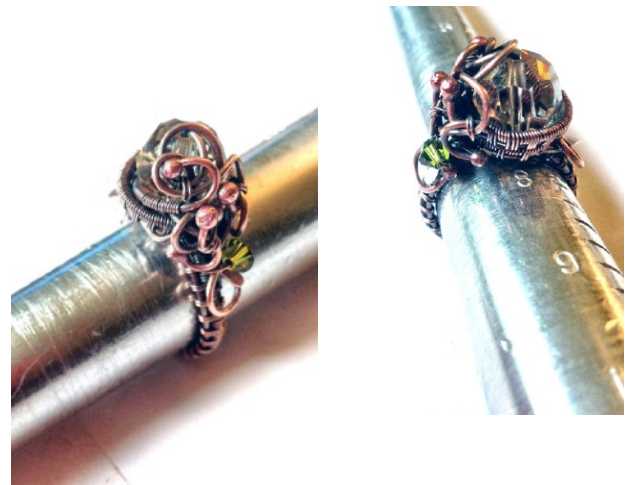
The rest is just hooking each end of the weave wires together to help lock them together. Leave the two 20g wires that stick straight out by the band from earlier steps for the end. See all the following pics for ideas how to finish your ring.



Next we'll deal with the last 2 wires, 1 on each side. Make a curl on the end in the direction that the 18g paddle is facing. Repeat for other side. Using the attached WW, make sure you sew your loose wires (curls) to the ring to secure it. You may choose to add a bead or crystal to either side of the ring in the curl you just made. (Optional) Trim off all WW.



Optional - antique with liver if sulphur, clean with 0000 steel wool and a metal brush. Finally polish with a polishing cloth. Paint the inside of the band with clear nail polish if your skin has a tendency to green from the copper. Enjoy!



Debbie Benninger  
<http://www.idjewelryanddesign.com>  
[idjewelryanddesign@gmail.com](mailto:idjewelryanddesign@gmail.com)  
(416)843-9991

Always remember to be  
"InDividual By Design"